

January 2021 rev.1

COLT-4

ULV Handheld Aerosol Generator - With 4 Cycle Gasoline Engine



OPERATING INSTRUCTIONS AND ILLUSTRATED PARTS

Worldwide Vector Control Since 1968

505 Brimhall Ave PO Box 406 Long Lake, Minnesota 55356

PHONE: (952) 473-5366 FAX: (952) 473-5302

www.londonfoggers.com | salesupport@londonfoggers.com

ONE YEAR LIMITED WARRANTY

LONDON FOG, INC. SUBJECT TO THE PROVISIONS BELOW WARRANT EACH NEW PRODUCT MANUFACTURED BY THE COMPANY TO BE FREE FROM DEFECTS IN MATERIAL AND/OR WORKMANSHIP IN NORMAL SERVICE FOR THE PERIOD ON ONE (1) YEAR COMMENCING WITH DELIVERY OF THE MACHINE TO THE ORIGINAL USER.

The obligation under this warranty is expressly limited to the replacement or repair, at the Company's option, at the plant of LONDON FOG, INC., Long Lake Minnesota or at a service facility designated by the company, of such part or parts as inspection shall disclose to have been defective. This warranty does not apply to defects caused or unreasonable use (including failure to provide reasonable and necessary maintenance) while in the possession of the user.

LONDON FOG, INC. SHALL NOT BE LIABLE FOR COLLATERAL, INDIRECT, INCIDENTAL OR CONSEQUENTIAL DAMAGES OF ANY KIND, including but not limited to, consequential labor costs or transportation charges in connection with the replacement or repair of defective parts or machines. The user assumes all liability for any damage of any kind which may result from its use or misuse by any employees, agents, persons or third parties unknown to Company or User.

All warranties, express, or implied, including any warranty created or established by statutory law or operation of law, are deemed null and void in the event that a product has been physically modified in any manner by the use, or any person or party other than the company.

The company makes no warranty with respect to engines, air pumps, blowers and products distributed by Company. Those parts and products are subject to warranties of their respective manufacturers.

THE WARRANTY EXPRESSED IN LIEU OF ALL OTHER WARRANTIES, EXPRESSED OR IMPLIED, STATUTORY OR OTHERWISE, INCLUDING ANY IMPLIED WARRANTY OF, MERCHANTABILITY OR FITNESS FOR A PARTICULAR PURPOSE. NO WARRANTIES ARE EXPRESSED OR IMPLIED WHICH EXTEND BEYOND THE DESCRIPTION CONTAINED IN THIS WRITTEN WARRANTY AND NO ONE IS AUTHORIZED TO MODIFY THIS WRITTEN WARRANTY.

WORLDWIDE VECTOR CONTROL SINCE 1968

Specifications Colt-4:

Engine:	Air Cooled, 4 stroke single cylinder, regular gasoline only
Fuel Tank:	20 Ounces, (.65 liters) 60-minute run time
Compressor:	Rotary Vane, Oil-less, 100% ball and roller bearing, graphite air fins
Formulation Tank:	One Quart, 32 ounces (.946 liters)
Formulation Output:	Siphon Nozzle with 3 orifice discs included.
Formula Metering:	1–4-ounce orifice discs included.
Particle Size:	80% less than 20 microns
Weight:	20 lbs dry (9.2 kg)
Length:	14 in. (35.6cm)
Width:	11.5 in. (28.2cm)
Height:	13.5 in. (34.3cm)

PRE-START CHECKLIST
This must be followed before each start.

- All safety equipment is in place _____
- Sufficient 87 Octane + gasoline in gas tank _____
- Oil in engine at proper level _____
- All fluid lines tight and connected _____
- Sufficient formulation in tank _____
- Flow rate is calibrated _____
- Nozzle is aimed properly _____
- Spray switch is in OFF position _____

CAUTION

Before proceeding with any spraying operation, the operator should be thoroughly familiar with starting and stopping the machine and with all the operating controls. If you are operating the machine for the first time, exercise the machine through its full operational sequences from a position of full visibility of the machine before operating the machine fully remote. This is also a good idea for experienced operators who may be operating a new machine or who may be reactivating a machine after repairs or a period of inactivity. Refer to the operation section for starting and stopping instructions.

COLT-4 Quick Start Checklist

A. Engine

- 1) Please **check oil level** in Colt-4 Honda engine with indicator in dipstick before each use
- 2) Engine is a 4-cycle engine, and thus uses only STRAIGHT GASOLINE, please do NOT mix any oil with the gasoline.
- 3) Oil is 10W-30 oil
- 4) Make sure RED on off button is in the ON position before starting, and choke lever is used during warm up only

B. Compressor

- 1) Please change compressor filter element when it is no longer "white looking", but turns brown which is an indication of clogged filtration

C. Chemical flow

- 1) After starting the engine, turn the spray on/off lever to ON to begin the siphon from the tank, please turn the spray knob to the OFF position to stop spray and "clear out the filter" of any remaining chemical in the lines.
(see page 4 language from the manual below)
- 2) The Colt -4 comes with 3 orifice discs for various flow. The 1 ounce per minute disc (#16 disc is imprinted on the orifice disc) is in the machine when shipping from the factory. Also included are #22 (1.5 ozs. per minute), #24 discs (2 ozs. per minute).

From Page 4 in the manual:

Rate of formulation flow is controlled by the orifice disc which is located in the hex nut screwed into the valve body, which is directly under the aerosol control valve. An orifice that gives approximately 1 Oz/Min (#16) flow rate with petroleum distillate base materials comes installed in the unit. 1 1/2 Oz/Min (#22) and 2 Oz/Min (#24) orifice discs are located in the round, white plastic container located on the top of the belt guard, just behind the nozzle. Additional discs for other flow rates are available. Using a larger orifice size will increase the formulation flow rate or keep the flow rate the same when using a more viscous material.

NOTE:

- "Spray at dawn or dusk when mosquitoes are most active."
- "Always refer to the insecticide label for mixing instructions."
- "Always turn off the aerosol before stopping the engine."

OPERATING INSTRUCTIONS

I. SAFETY PRECAUTIONS

- A. Observe all precautions on the registration and any other labels of the insecticide being used. Do not handle London Fog machine parts which come in contact with the insecticide until the machine has first been thoroughly flushed and the parts have been cleaned while observing label recommended cautions.
- B. Never fill the gasoline tank when the engine is running, or hot from running. Gasoline spilled on hot engine parts may cause a fire or explosion.
- C. An approved respirator mask must be worn by all personnel exposed to the aerosol.
- D. Never leave a hot unit indoors. Allow it to cool off outdoors before transporting or storing.
- E. Never run engine in enclosed, poorly ventilated areas. Engine exhaust gases contain carbon monoxide, an odorless and deadly gas.

IN NO WAY IS IT TO BE CONSTRUED THAT THE CHEMICALS AND/OR DOSAGES ARE THE RECOMMENDATION OF LONDON FOG, INC.

LONDON FOG, INC. SHALL IN NO EVENT BE LIABLE FOR CONSEQUENTIAL DAMAGES OR CONTINGENT LIABILITIES ARISING OUT OF THE FAILURE OF ANY AEROSOL GENERATOR OR PART TO OPERATE PROPERLY.

OPERATING INSTRUCTIONS (continued)

II. SERVICE BEFORE START-UP Engine Prestart Preparations

ENGINE OIL LEVEL

BEFORE EACH USE check the oil as follows:

- A. Make sure the engine is stopped and resting on a level surface. Also make sure the engine is cool and the oil has had time to drain into the sump.
- B. Clean the area around the dipstick and filler cap to keep dirt and debris out of the engine.
- C. Remove the dipstick and wipe oil off. Reinsert the dipstick and set in crankcase. Remove the dipstick and check the level.
- D. Add the proper type of oil if the level is low. Bring the level up to, but not over, the hash mark on the dipstick.

CAUTION:

DO NOT operate the engine with the oil level below cross hatch.

- * Check engine oil dipstick as opposed to adding a given quantity of oil. **Always check level on dipstick before starting or adding more oil.**

Colt engine is a 4-stroke engine. It does NOT require mixing of oil in gas.

Please fill gasoline tank with 87 octane (non-ethanol) fuel only.

FILL FUEL TANK with fuel as specified in preceding instructions.

Remove fuel fill cap and place it on a clean surface.

OPERATING INSTRUCTIONS

(continued)

NEVER FILL FUEL TANK INDOORS, WITH ENGINE RUNNING OR WHILE ENGINE IS HOT.

NEVER FILL FUEL TANK COMPLETELY. FILL TANK TO WITHIN 1/4 TO 1/2 INCH OF TOP OF TANK TO PROVIDE SPACE FOR FUEL EXPANSION. WIPE ANY FUEL SPILLAGE FROM ENGINE AND EQUIPMENT BEFORE STARTING ENGINE.

CHECK THE FOLLOWING before attempting to start your engine:
Be sure ignition switch is in the ON position.

III. OPERATION

A. FORMULATION

1. Unscrew the bottle cap from the formulation bottle
2. Service the formulation bottle with the proper insecticide formulation and turn the bottle cap tight.

B. ENGINE: Honda 4 cycle

1. COLD ENGINE START (Engine has not been run recently)
 - a. Push Primer Bulb 6-8 times. Choke lever must be in the up position. Pull starter handle with a smooth rapid movement; rewind smoothly. Do not allow rope to snap back.
2. WARM ENGINE START (Engine has been run recently)

Pull starter handle until engine starts. If engine fails to start after several attempts, follow preceding "Cold Engine Start" instructions.

TO STOP ENGINE

To STOP the engine, move ignition switch to the OFF position.

OPERATING INSTRUCTIONS

(continued)

C. AEROSOL OPERATING INSTRUCTIONS

1. Use only insecticide formulation labeled for ground ULV application and supplied by a reputable dealer or distributor.
2. In order to obtain the best aerosol quality, allow engine and compressor to run until the engine is warmed up before turning the aerosol ON.
3. With machine running, the aerosol is turned ON by rotating the valve 180 degrees counterclockwise. Rotating the valve 180 degrees clockwise turns the aerosol OFF. With the addition of the new 3-way ball valve there is a 6-10 second delay before spray begins.
4. Rate of formulation flow is controlled by the orifice disc which is located in the hex nut screwed into the valve body, which is directly under the aerosol control valve. An orifice that gives approximately 1 Oz/Min (#16) flow rate with petroleum distillate base materials comes installed in the unit. 1 1/2 Oz/Min (#22) and 2 Oz/Min (#24) orifice discs are located in the round, white plastic container located on the top of the belt guard, just behind the nozzle. Additional discs for other flow rates are available upon specific requests.
5. Using a larger orifice size will increase the formulation flow rate or keep the flow rate the same when using a more viscous material.
6. Always turn off the aerosol before stopping the engine.

IV APPLICATION INSTRUCTIONS

A. GENERAL INSTRUCTIONS

1. Read and understand chemical labels and instructions.
2. Use only chemicals that are labeled for ground ULV application.
3. Always use a respirator that is adequate for the chemical and particle size being aerosolized.

OPERATING INSTRUCTIONS

(continued)

B. INDOOR APPLICATION

1. It is a good practice to remove all pets and animals when possible. Fishbowls and aquariums should be removed or covered. The air supply to aquariums should be turned off.
2. Shut off the area to be treated as tightly as possible. Close all doors and windows. Turn off ventilators, fans, air conditioners. Leave off for a minimum of 1 hour after treatment.
3. For best results, interior doors, cabinets, etc. should be left open. Open food containers should be sealed.
4. While the possibility of explosion is remote, good application practice requires the extinguishing of open flames, pilot lights, etc. Electricity should be turned off.
5. All food stuffs, plants, surfaces or other items that could be affected by insecticide should be removed, covered or sealed.
6. **Always stay with the equipment when in operation. Never leave the machine unattended.**
7. Know the formulation application rate and the time required to treat the area. Walk leisurely through the area timing your application. Start at the furthest point from the exit and work toward it. This should minimize your exposure to the insecticide.
8. Keep the nozzle at least 3 feet from any target at all times. Short direct shots to known or suspected trouble areas are an acceptable practice and should not leave an oil residue on the target.
9. Allow the aerosol to stand as long as possible before opening and ventilating the treated area. Let stand 1 hour as an absolute minimum with 2-6 hours being preferred.
10. A typical flow rate is approximately 1 oz. of formulation per minute. To determine the application time, first determine the total amount of formulation to be used:

OPERATING INSTRUCTIONS (continued)

$$\frac{(\text{cu.ft. of area to be treated}) (\text{oz. of formulation req'd per 1000 cu.ft.})}{1000} = \text{oz. of formulation}$$

oz. of formulation = application time in minutes
calibrated flow rate in oz./min.

Example: A 50,000 cu. ft. area is to be treated using 1/4 oz. of formulation per 1000 cu. ft.

$$\frac{(50,000 \text{ cu. ft.}) (.25 \text{ oz./1000 cu.ft.})}{1000} = 12.5 \text{ oz. of formulation}$$

C. CALIBRATION

Since the nozzle used is an external mix siphon (suction) type nozzle, calibration must be made with the machine running.

1. Carefully remove the pickup tube from the formulation tank by pulling it straight up and out of the tank. Place the P/U tube in a graduated beaker.
2. With the machine running, using a stopwatch and graduated beaker, measure the flow for (1) minute and note the amount of fluid used.

Care should be taken not to have the graduated beaker higher than the top of the formulation tank, or lower than the bottom of the formulation, as this will affect the accuracy of the calibration.

NOTE: If the beaker size permits, use a 2- or 3-minute sample for better accuracy. Just divide the total amount used by 2 or 3 (the actual time) to get a one-minute reading divide ML by 29.57 to get ounces. To change flow rate, install a larger or smaller orifice provided with the machine. Repeat the calibration.

OPERATING INSTRUCTIONS

(continued)

D. OUTDOOR APPLICATIONS

1. Areas around homes, picnic areas, swimming pools, etc.
 - a. Best results are obtained in the cooler hours of early morning or evening when the insects are most active. Ideal wind speed is between 3-7 mph. If wind speed exceeds 10 mph., it is not recommended to disperse insecticide.
 - b. Start upwind of the area to be treated and walk at a leisurely pace (2 mph). Keep the nozzle downwind and about waist high.
 - c. If your desired application rate is about 1 oz. per acre, set your flow rate to approximately 1 oz/min. Assuming an application swath of 125 ft., and walking at 2 mph, you should cover approximately 1/2 acre per minute. If using a flow rate of 2 oz/min, walk briskly (approx. 4 mph) and you will cover 1 acre per minute.
 - d. If the area to be treated is over 125 ft. deep, move downwind approximately 50-75 ft. on each successive pass.

CAUTION An approved respirator mask must be worn by all personnel exposed to the aerosol.

V. FLUSHING

Depending upon the insecticide used, it may be desirable to flush out the insecticide system by running a suitable flushing agent through the machine after each use. A general-purpose degreaser is recommended for flushing.

CAUTION An approved respirator mask must be worn by all personnel exposed to the aerosol.

OPERATING INSTRUCTIONS (continued)

VI PREPARATION FOR STORAGE

MACHINE

Prepare unit for storage by draining all the formulation from the container. Then partially fill container with range oil (#1 fuel oil) or general-purpose degreaser. Flush system by operating unit until the above base oil is consumed. Finally drain any remaining base oil from the container. Drain fuel or run dry gasoline tank. All tanks should be run dry. Clean filter located attached to On/Off handle and inspect. Replace as necessary.

ORIFICE DISC CHART

(See Item #26 on Exploded View, for Orifice Location)

NOTE: To order replacement orifices or orifices not listed, use part number: 3-408.xx for desired size.

Example: 3-408.14 = .014 diameter hole, 1 ounce disc or
 3-408.51 = .51 disc or 6-ounce disc, .51 diameter hole

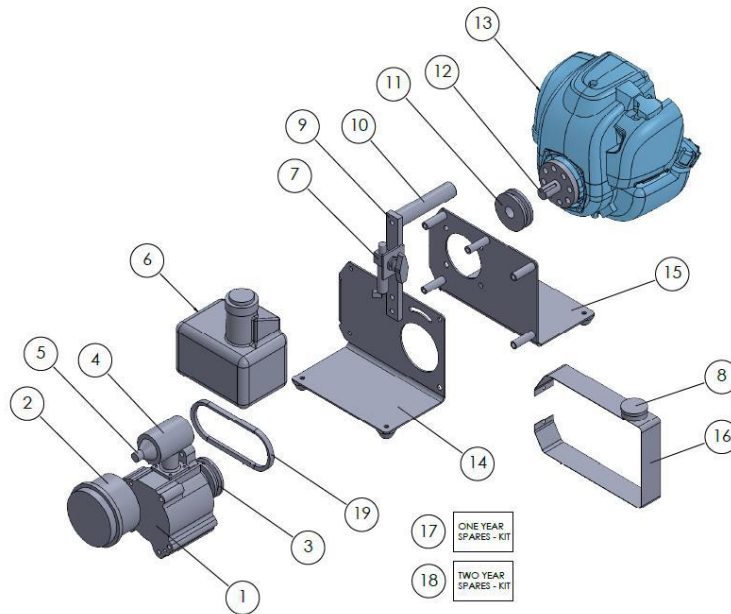
*Chemical formulations with "thin" viscosity carrier oils such as kerosene, mineral oil, diluent oils, Etc.

<u>* Oz/Min</u>	<u>Orifice Disc #</u>
1	16
1.5	22
2	24

Discs Included with Machine 16,22,24.
Disc Installed with machine at factory: #16

* These are approximate settings. Always calibrate in order to obtain true flow rates.

EXPLODED VIEW, COLT



Colt PN # 4-1000

Balloon Number

- 1 Blower Complete w/ Pulley
- 2 Blower Filter Assembly
- 3 Blower Pully
- 4 Blower Nozzle
- 5 Blower Nozzle tip
- 6 Formulation Tank Assembly Complete
- 7 Spray On/Off Complete
- 8 Orifice Discs (qty 3, #16 disc - #22 disc - #24 disc)
- 9 Aluminum Handle Brace
- 10 Handle
- 11 Engine Pulley
- 12 Crankshaft Extension
- 13 Honda 4 cycle engine
- 14 Frame half, blower
- 15 Frame half, engine
- 16 Belt Guard Assembly
- 17 One Year Spare Parts Kit
- 18 Two Year Spare Parts Kit
- 19 Drive Belts
- 20 Carry Strap (not pictured)

Part Number

- 4-200
- 4-208
- 4-274
- 4-303M
- 4-302
- 4-700A
- 4-650A
- 3-408.xx
- 4-405M
- 4-406
- 4-102
- 4-104
- 4-101
- 4-411M
- 4-412M
- 4-410A
- 4-1001SP
- 4-1002SP
- 4-203
- 4-671

MANDATORY SERVICE SCHEDULE

HOURS

ITEMS TO BE SERVICED

Daily

25

50

100

500

Clean Air Pump Filter		X			
Check Engine Oil Level	X				
Check Engine Oil	X				
Change Engine Oil (10W-30)			X		
Check Engine Air Intake	X				
Clean Engine Cooling Fins			X		
Clean Engine Air Foam Precleaner		X			
Clean Engine Air Filter		X			
Clean Engine Fuel Filter					X
Replace Engine Spark Plug				X	
Calibration				X	

Check All Fittings	X				
Clean Formulation Filter				X	
Fill Flush Tank	X				
Check Belt Tension			X		

Refer to engine service manual or authorized service dealer.